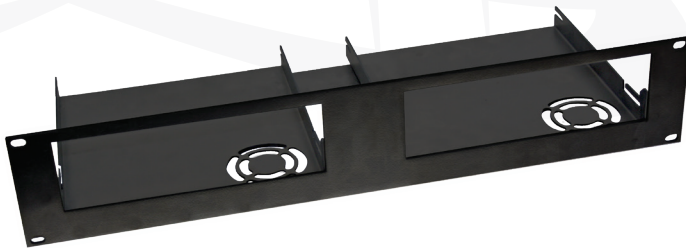


Rack Plate Mount for SEC Power Supplies

Model
SEC-R1, SEC-R2



SEC-R1



SEC-R2



SEC-R2 with SEC-1223 & SEC-1235M

SEC-R1 and SEC-R2 rack mount plates are compatible with all Samlex SEC Series models of switching desktop power supplies ranging from 12 to 35 Amps. Available with one or two trays, these 19", 2U assemblies are easily user configurable.

Fitting a power supply into the rack mount is very simple – just slide into the tray and secure with the screws already included with the power supply.

The dual trays of the SEC-R2 provide side-by-side flexibility. Mount any combination of SEC desktop Power Supplies or install one Power Supply and use the second shelf to store a mobile radio or battery pack.

Design Features

- Ultra Heavy Gauge Steel; will not bend or deform
- Black powder coated finish is scuff resistant
- Precision cut mounting slots for quick, easy and secure mounting
- Vent slots allow unobstructed air flow from Power Supply cooling fans

SEC-R1 & SEC-R2 Rack Plates are compatible with the following Power Supply models:

- SEC-1212/SEC-1212CE
- SEC-1223/SEC-1223CE
- SEC-1235/SEC-1235M
- SEC-1223BBM/SEC-1223BBM-230

2 YEAR WARRANTY

	MODEL NO.	SEC-R1	SEC-R2
DIMENSIONS	(W x D x H), CM	48.18 x 18.54 x 8.74	48.18 x 18.54 x 8.74
	(W x D x H), INCHES	18.97 x 7.30 x 3.44	18.97 x 7.30 x 3.44
WEIGHT	KG	1.08	1.45
	LBS	2.4	3.2